

# It was in Judah's land

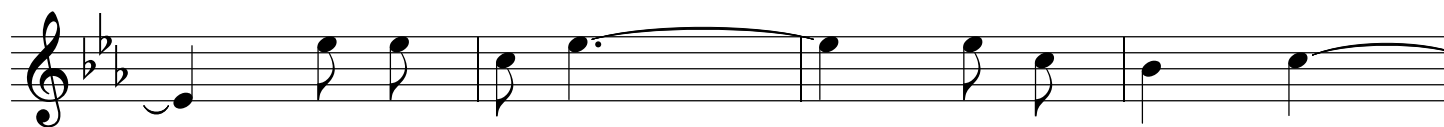
## *Appalachian Carol*



1. It was in Ju - dah's land By God's al - migh - ty  
2. 'Twas by his mo - ther's hand, He was wrapped in swad-dling



1. hand, That Je - sus Christ was born in the val - ley,  
2. band, And in a man - ger laid in the val - ley,



1. In the val - ley, in the val - ley,  
2. In the val - ley, in the val - ley,



1. That Je - sus Christ was born in the val - ley.  
2. And in a man - ger born in the val - ley.

