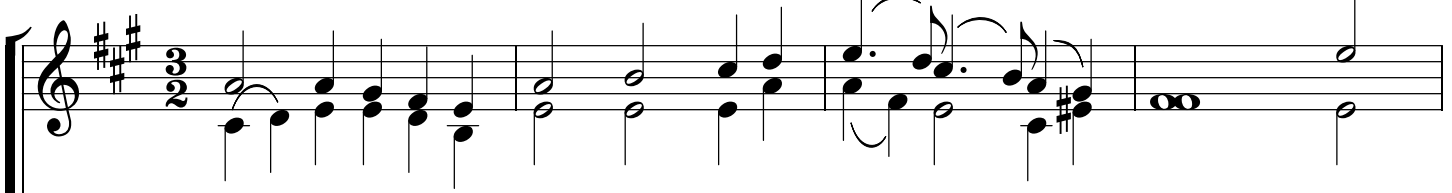


Cherry Tree Carol

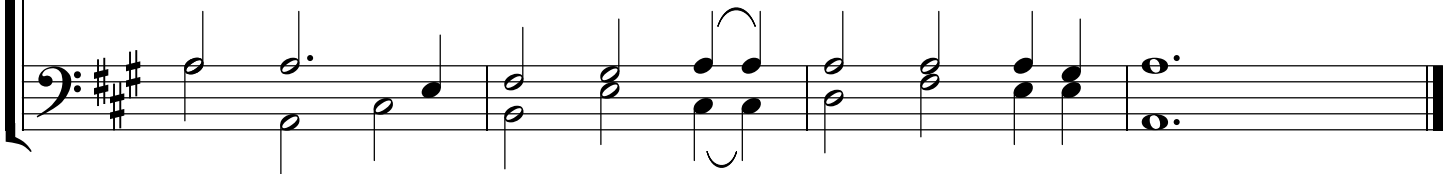
Berkshire Gipsy Version



1. O Jo-seph was an old man, And an old man was he, And
2. Oft af - ter he had mar-ried her, How warm he were a - broad, [He
3. Then Ma - ry and Jo - seph Walked down to the gar - dens cool; Then
4. "Bro-ther Jo-seph pluck the cher-ry, For I am with child," "Let
5. Then our bless-ed Sa - viour spoke, From his mo - ther's womb, "Ma -



1. he mar - ried Ma-ry From the land of Ga - li - lee.
2. spied a sha-dy bower, And gave thanks to the Lord.]
3. Ma - ry spied a cher-ry, As red as an - y blood.
4. him pluck the cher-ry Ma-ry, As fa - ther to the child."
5. ry shall have cher - ries, And Jo - seph shall have none." ,



6. From the high bough the cherry tree
Bowed down to Mary's knees;
Then Mary plucked the cherries,
By one, by two, and three.
7. They went a little further,
And heard a great din:
"God bless our Sweet Saviour,
Our heaven's love in."
8. Our Saviour was not rocked
In silver or in gold,
But in a wooden cradle,
Like other babies all.
9. Our Saviour was not christened,
In white wine or in red,
But in some spring water,
Like other babies all.

A musical score consisting of two staves, both in the key of D major (two sharps: F# and C#). The top staff uses a treble clef and the bottom staff uses a bass clef. Each staff contains four measures, each with a whole rest. The rests are positioned on the middle line of each staff.