

There was a pig went out to dig

Traditional Lancashire Carol

arr. Lucy E. Broadwood

1



1. There
2. There
3. There
4. There
5. There

5

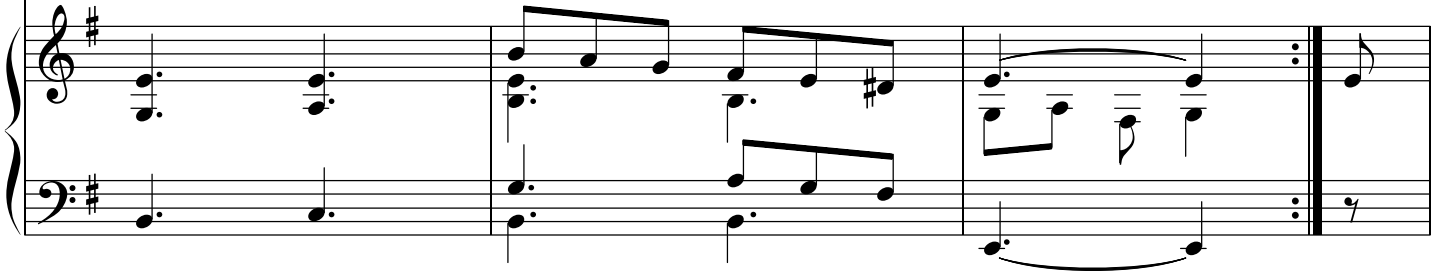


1. was a pig went out to dig, Chris-i-mas Day, Chris-i-mas Day, There was a pig went
2. was a cow went out to plough, Chris-i-mas Day, Chris-i-mas Day, There was a cow went
3. was a sparrow went out to harrow, Chris-i-mas Day, Chris-i-mas Day, There was a sparrow went
4. was a drake went out to rake, Chris-i-mas Day, Chris-i-mas Day, There was a drake went
5. was a crow went out to sow, Chris-i-mas Day, Chris-i-mas Day, There was a crow went

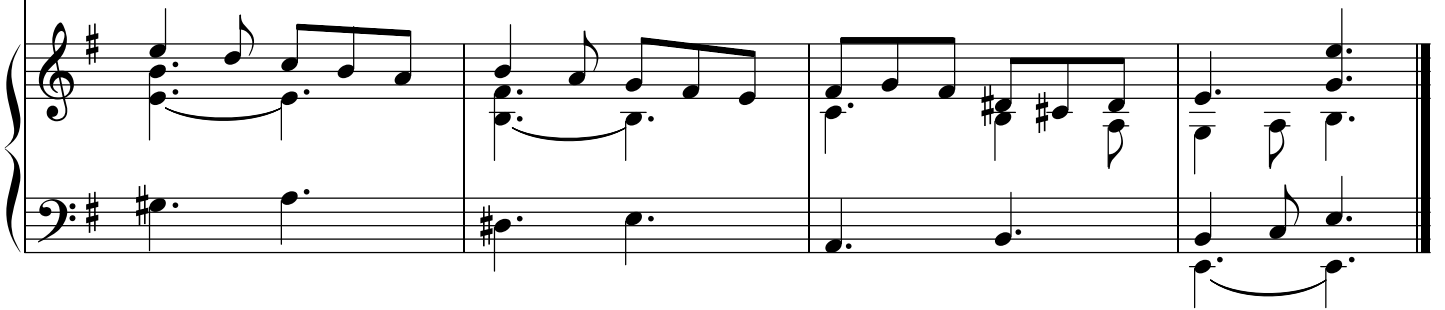
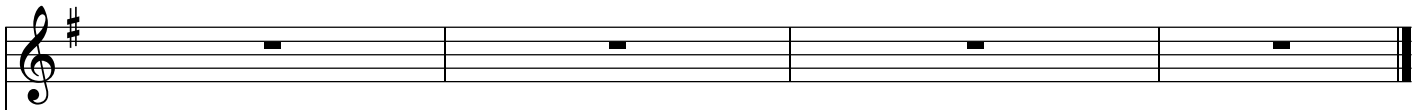
10



1. out to dig, On Chris - i - mas Day in the morn - ing.
2. out to plough, On Chris - i - mas Day in the morn - ing.
3. out to harrow, On Chris - i - mas Day in the morn - ing.
4. out to rake, On Chris - i - mas Day in the morn - ing.
5. out to sow, On Chris - i - mas Day in the morn - ing.



13



6. There was a sheep went out to reap,
Christmas Day, &c.
7. There was a minnow went out to winnow,
Christmas Day, &c.